

**TRADITION PIERRE**

FRANCE

Enamelled lava  
from our volcanoes  
d'Auvergne



# A word from Jean-Charles

## Founder of Tradition Pierre



Tradition Pierre is a story about a family centered around enamelled lava stone

Tradition Pierre was born out of love and expertise for this bedrock.

Made up of a passionate team (an enameller colorist, master enameller, craftsmen, etc.) we wish to bring awareness and share this fabulous high-end product; originating from our volcanos in Auvergne, an ancient and natural stone rejuvenated by its modern enameling.

Today, we have an almost unlimited number of possibilities for the creation and use of volcanic stone because it holds potential that other types of stone do not. We work in numerous fields such as decoration, real estate, interior design (bathrooms, kitchens, relaxation areas) and many more! For us...

This is Tradition Pierre

# Summary



**TRADITION PIERRE**  
**FRANCE**

- \* **From the stone the work**
- \* **The team**
- \* **Stone comes to life**
- \* **Some creations**
- \* **Technical notebook**



**TRADITION PIERRE**

FRANCE



From the stone  
to the work





# A stone natural & ancestral

The Puys chain is a group of 80 volcanoes stretching over 45 km in the north of the Massif Central, France. This set is part of the Auvergne volcanoes.



These volcanoes date from the Quaternary era, the first eruptions took place there approximately 95,000 years ago, the most recent **8,600 years ago**.

It was in 1751 that Jean Etienne Guettard (1715-1786) determined the volcanic nature of these mountains. Until this date, local scientists took them for the remains of gigantic Roman forges.

After many disputes, Malesherbes definitively attributed the paternity of this discovery to Guettard. According to the latter, it would seem that the Romans, during the conquest of Gaul, had already correctly identified the nature of these mountains, being from a country where volcanoes are numerous. Thus, the name of **Volvic** comes from the Latin Volcani vicus which means “village of the volcano”.

The lava flows emanating from the puys have served as a construction quarry for millennia. At the beginning of our era, the Romans took the stones from it to build **the temple of Mercury** at the top of Puy De Dôme. In the middle of the 12th century, monks opened underground quarries in these lava flows..

Part of the quarried stone was used in 1248 for the construction of **Clermont-Fd cathedral**, a masterpiece of Gothic art, which **has never had to be restored to this day**. With this rock, many buildings and edifices would be built, in particular with that known as Pierre de Volvic, and many other uses emerged in time...

And the incredible history of the Chaîne des Puys continues to this day, with its designation on July 2, 2018 as a **UNESCO World Heritage Site**.



# An expertise dating back several centuries

## Définition

Lava enamelling is a technique that **covers a support with a vitreous layer**; the pigments are fixed to the support by baking at a temperature around **960° C**.

Lava is the only type of stone that supports enameling. The surface of the enamel has cracks (crazing) which is explained by the fact that the enamel has a coefficient of expansion higher than that of lava; on cooling, the difference in shrinkage causes the appearance of this phenomenon of micro-cracking.

## Characteristics

Enamelled lava has properties which explain its use for utilitarian or decorative purposes, the main ones of which are undoubtedly its great resistance to thermal or chemical attacks and its stability over time.

It supports very high temperatures and is insensitive to frost. It is rotproof and the colors are stable in sunlight. Very hygienic, it does not scratch, does not stain, supports acids, bleach etc. and easy to clean.

## PROCESS : the main stages of enamelled lava

- ① Bulk raw material extraction
- ② Cutting the block into slices
- ③ Finishing, sanding, shaping
- ④ Preparation for enamelling (slip)
- ⑤ Cooking
- ⑥ Lava enamelling
- ⑦ Cooking

These steps vary depending on the complexity of the parts, the enamelling ...

## History

- **1791**, First patent for stone enamelling by Louis François Ollivier. In Volvic, discovery of a perfectly preserved domite sarcophagus. The Brosseau brothers (lava exploiters) were informed of this by Chabrol de Volvic (founder of the EDAV - 1820).
- **From 1822**, use of Volvic lava in Paris thanks to Chabrol de Volvic. Enamelling of glass and lava by Louis Luton. Lava enamelling research by Dutrieux..
- **August 25, 1824**, laying of the first stone of the Church of St Vincent de Paul in Paris. Enamelling of a Domite tile by Barruel (laboratory of the Sorbonne). First enamel painting on lava by Ferdinand Mortelecque: an old man's head.
- **1827 - 1828**, various memories and patent filings: Brosseau, Cagniard de la Tour, Jean-Baptiste Roger, Charles François Ledru, Ledru and Roger...
- **1828**, decision to adopt enamelled lava for Paris street signs. First street sign market for Paris awarded to the Hachette company, which would later partner with Brosseau.
- **1833**, project of polychrome enamelled lava decoration for the church St Vincent de Paul in Paris, by Hittorff.
- **1845**, François Gillet produced for Pierre-Jules Jollivet the first set (as an essay) for the decoration of the Church of St Vincent de Paul.
- **August 26, 1859**, François Gillet completes the decoration of the church of St Vincent de Paul (according to the cartoons of Jollivet)
- **February 2, 1860**, end of the installation of the enamelled lava decoration of the church St Vincent de Paul.



**TRADITION PIERRE**

FRANCE

The team



# Jean-Charles MATRONE

Manager & founder of the company

Bold, determined & dynamic,  
ambitious & authentic

*Since I was very young, I have been in contact with stone! Son of a mason, I joined my father in the family business. One day, a building site introduced me to enamelled lava! (Being Auvergnat, I'd heard about it but never seen it in person). The company told me that this would be its last project, with them closing ... Leaving two members, Alain and Frédo, with no alternative.*

*So, with the opportunity seeming obvious, I decided to take up this extraordinary activity, this ancestral knowhow, this material from my native region. I submitted the idea to Alain and Frédo, and together we embarked on this adventure!*





Créative, enthusiastic  
& organized



# Anne-So MATRONE

Responsable d'atelier

*«Details make perfection, and perfection is not a detail» Leonardo da Vinci*

*When Jean-Charles asked me to join him in this adventure, it was without hesitation that I accepted! To develop a workshop for enamelled lava...*

*Every day, it is a pleasure to work with such a noble material, so rich in possibilities. An exceptional savoir-faire that combines technique and art.*

*With a motivated and creative team, we are reinventing enamelled lava, and it is fascinating!*





## Alain CAVY

Enameller, colourist

Careful, diligent, curious,  
patient & passionate

*I have always wanted to make a profession of Art. When I was young, I made music and then drew, until I graduated as a technician in applied arts. But to find work as an artist and make a living from it is complicated. So you need luck, an internship in the stone trades and enamelling at Volvic, was my revelation!*

*Immediately afterward, a company was looking for a young person to start in the enameled lava trade. It was perfect for me, I felt I had to do it! Hard work, research, discovery, failure and success. In short, a daily passion that still hold me. And 30 years later, Tradition Pierre in turn embarked on this superb craftsmanship and called on me for my know-how. Nothing is more beautiful than the glow of an oven and this lava in all its brilliance!*

Words from Auvergnat





# Alfredo DE OLIVEIRA

Shaper, stonemason

Manual, applied, thoughtful,  
& perfectionist

*I have been working as a shaper for 25 years, what I love about this job is working with rough stone and then giving it a shape. With stone, you can imagine anything.*

*I find it hard to explain in words the love I have for this job, so I show it!*

*I am always told that when I shape, my eyes light up!*







# Alexandre PERRON

Enameller

Patient, meticulous,  
versatile & motivated

*I chose to learn the craft of a lava enameller. I find it an atypical, manual job, which also requires a lot of thought, meticulousness.*

*The fact of receiving, applying and conveying know-how, in order to make this profession last over time, appealed to me.*





Organized, committed,  
calm & thoughtful



# Isabelle BONY

Administrative support specialist

*Being from Auvergne, I'm proud to be a part of Tradition Pierre and to help promote the special stone originating from our volcanoes.*

*I dreamt for a long time of working in a family-oriented business, where teamwork is essential and everyone gives the best of themselves, to ensure that our work is as successful as possible.*

*What a satisfaction it is when one of our customers tells us that the creation we made for them is «sublime»!*





# Otello

Mascot

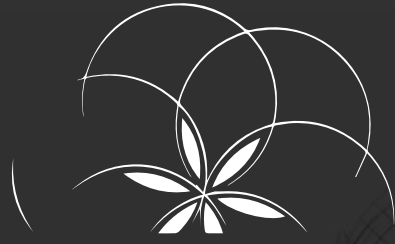
Affectionate, faithful

Very cute

*Every day Otello looks forward to just one thing... heading to the workshop!*

*He patiently waits for the whole team to arrive, before coming to ask for his morning walk, which he never misses. He watches over the workshop, reminds us when it's time for lunch and affectionately welcomes visitors. And believe us, nothing is better for a relaxing break than giving him a good stroke!*





**TRADITION PIERRE**  
FRANCE

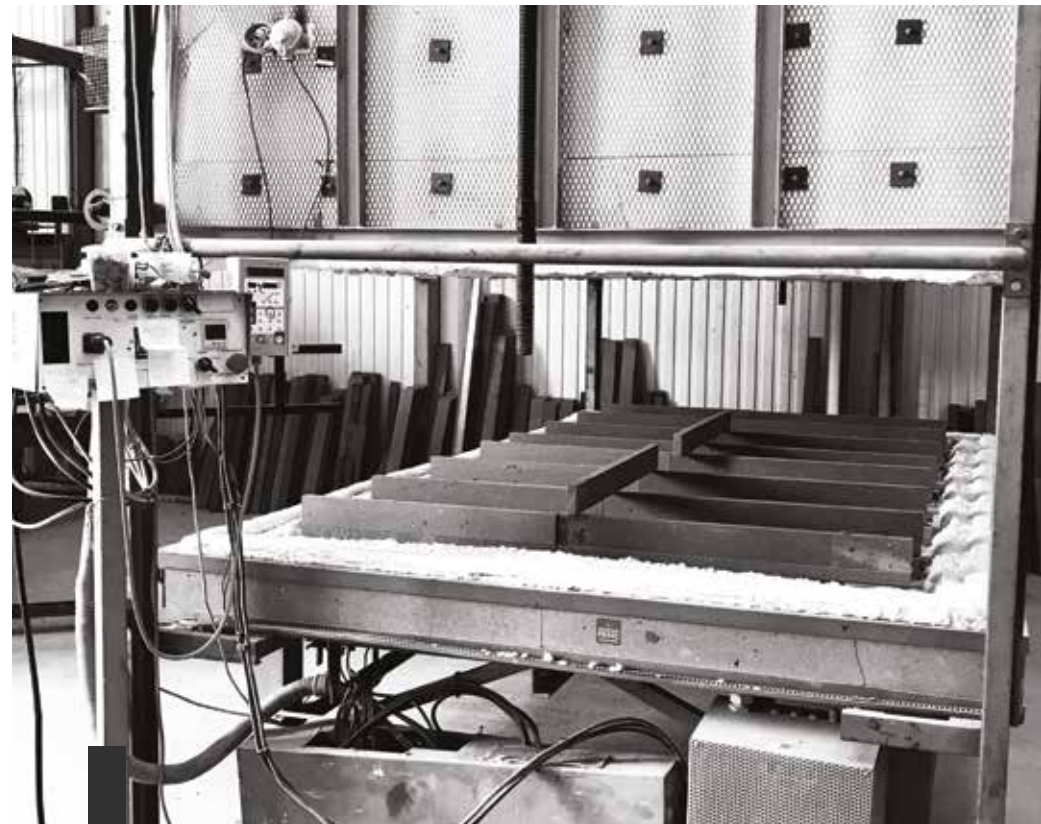


Stone comes  
to life





# L'atelier Tradition Pierre



## **TRADITION PIERRE**

5 rue de Grangevieille 63370 LEMPDES

+33 (0)4 73 83 65 83 / +33 (0)6 86 69 69 03

[office@traditionpierre.com](mailto:office@traditionpierre.com)

[www.traditionpierre.com](http://www.traditionpierre.com)



# La lave émaillée par Tradition Pierre



## \* Origin of lava stone

The stone is mined within our beautiful Auvergne region, according to the three extraction sites in Volvic, Mont-Dore and Chambois (from which they take their names).

## \* Origin of enamels

We only work with quality enamels, coming from Limoges (87).

## \* Maintenance of enamelled lava

In view of its technical characteristics, enamelled lava only requires a simple wipe with soapy water.

## \* L'atelier Tradition Pierre

Our workshop is based in Lempdes, near Clermont Ferrand (63).

## \* Les valeurs Tradition Pierre

We are not suppliers, but artisans ! We support your project. Our goal is to amaze you !

Volvic lava



Chambois lava



Mont-Dore lava







# Le showroom de Paris



At the heart of an atypical and unique space dedicated to design and art, in this unmissable place that is the vanguard of style the concept store L'éclaireur - Héroid, we have the privilege of exhibiting some of our unique pieces made in our workshops.

Our enamelled lava is highlighted by this magnificent place alongside other exceptional pieces



# La lave émaillée à Paris



**LECLAIREUR - HÉROLD**

10 rue Hérold 75001 PARIS

(+33) 140 410 989

herold@leclaireur.com

**Ouvert** du lundi au samedi de 11 h à 19 h





# Architects and partners

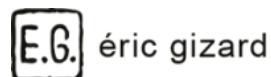


EDM



Tristan Auer

double g



MarionMailaender



OHARA DAVIES-GAETANO  
- INTERIORS -

STUDIO PUTMAN

Sandrine Sarah Faivre  
architecte d'intérieur, Paris



LAURA GONZALEZ

VICTOR BONNIVARD

françois Champsaur

In France and internationally (Paris, Dubai, London, Geneva), they trust us ...





**TRADITION PIERRE**

FRANCE

Some of our  
creations





# An original kitchen !



## The elements

Bathroom design, massive washbasin counters, basin counters, under-basin counters, headboards, shelves...



## The choices

Customized or RAL colors.  
Pattern creation (done by hand) or chromo application (printed on lava).



## The finishing touches

Colors that are bright, mat, single-colored, shaded, with effects e dge (straight, ¼ curve, draft stopper, wing...).



## The technical details

The technical details  
Slabs up to 3m x 1.60m  
Thickness: from 8mm (vener) to 80mm (solid not hollowed).  
Solid lava: shaped, milled...  
Basins made of lava: max depth 210mm  
Made to measure.







# A natural beautiful bathroom



## The elements

Bathroom design, massive washbasin counters, basin counters, under-basin counters, headboards, shelves...



## The choices

Customized or RAL colors.  
Pattern creation (done by hand) or chromo application (printed on lava).



## The finishing touches

Colors that are bright, mat, single-colored, shaded, with effects edge (straight, ¼ curve, draft stopper, wing...)



## The technicals details

Slabs up to 3m x 16m  
Thickness: from 8mm (vener) to 80mm (solid not hollowed).  
Solid lava: shaped, milled...  
Basins made of lava : max depth 210mm  
Made to measure.





# Volcanic furniture !



## The elements

Tables, coffee tables, pedestal tables, dressing tables, shelving units, consoles, shelves...



## The choices

Customized or RAL colors.  
Pattern creation (done by hand) or chromo application (printed on lava).



## The finishing touches

Colors that are bright, mat, single-colored, shaded, with effects.  
Unlimited shapes.



## The technical details

Slabs up to 3m x 16m  
Thickness: from 8mm (veneer) to 80mm (solid not hollowed).  
Solid lava: shaped, milled...  
Made to measure.







# A fragment of lava in one's house or in one's garden !



## The elements

Tables, washbasin, consoles, shelves  
...



## The choices

Lava from Volvic (dark gray aspect).  
Lava from Mont Dore (light gray aspect  
with white crystals).  
Lava from Chambois (gray and bullous  
aspect).



## The finishing touches

Raw or water repellent stone.  
Different finishes (crude, polished,  
ruff, brushed...)



## The technical details

Slabs up to 3m x 16m  
Thickness: from 8mm (vener) to  
80mm (solid not hollowed).  
Solid lava: shaped, milled...  
Basins made of lava: max depth 210mm  
Made to measure.







# A time-defying exterior !



## The elements

Stairs in raw stone, decorative borders, benches in raw stone, enamel and raw stone fusing ...



## The choices

Untreated = Lava from Volvic, Mont Dore, Chambois

Enameled = Customized or RAL colors, pattern creation (done by hand) or chromo application (printed on lava).



## The finishing touches

Untreated = Polished, bush-hammered, brushed...

Enameled = Colors that are bright, mat, single-colored, shaded, with effects.



## The technical details

Slabs up to 3m x 16m

Thickness: from 8mm (veneer) to 80mm (solid not hollowed).

Solid lava: shaped, milled...

Made to measure.

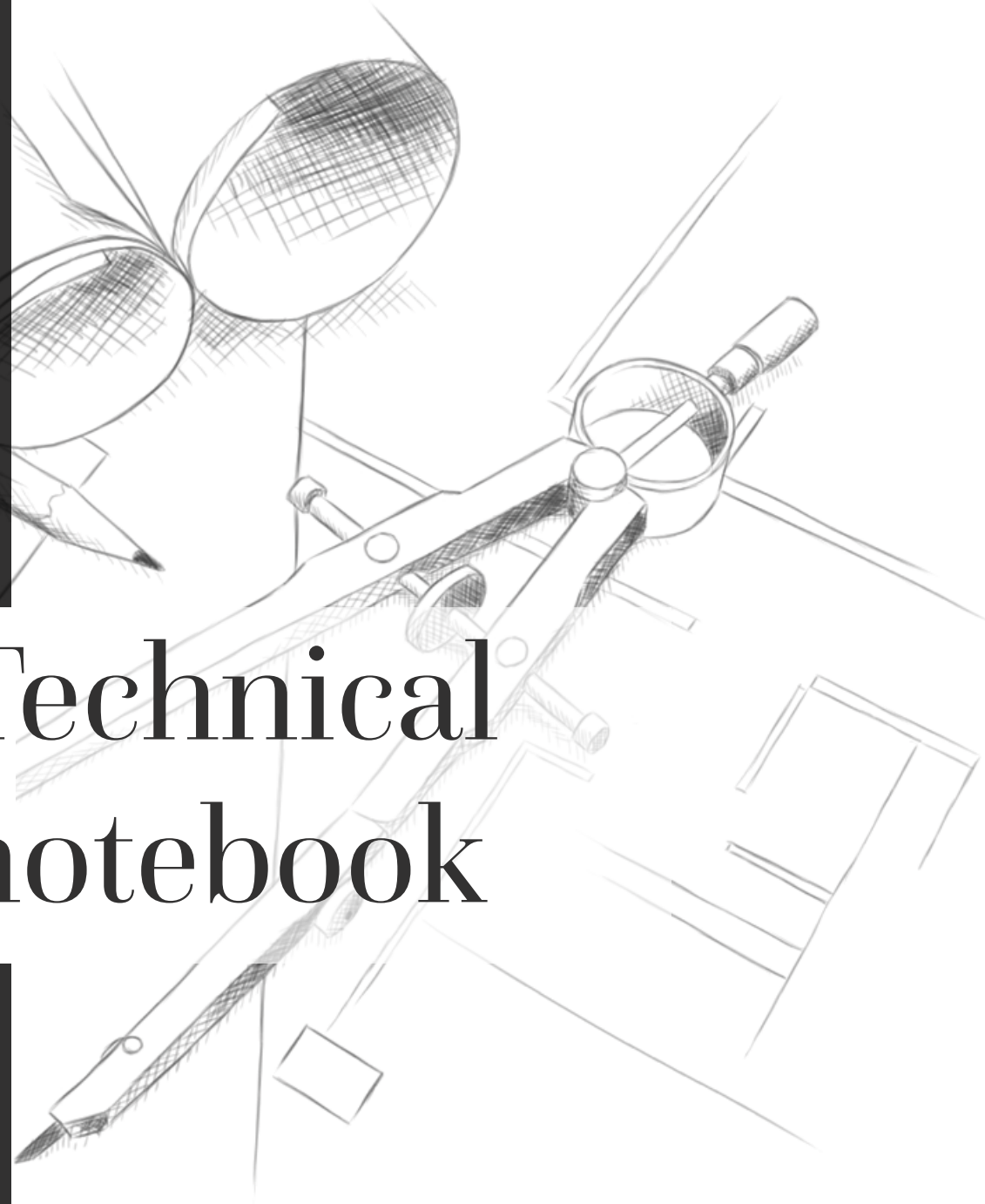




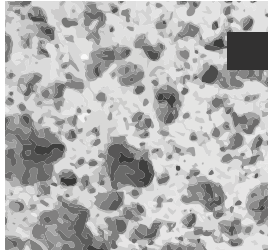
**TRADITION PIERRE**

FRANCE

Technical  
notebook

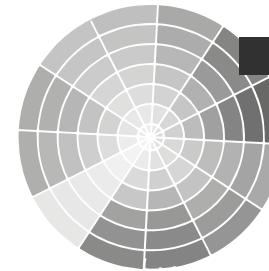


# Unique and limitless



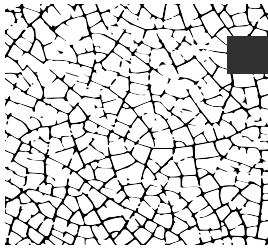
## Porosity

Each piece of lava is unique  
#original.print  
#natural.material



## Color

A palet  
#tailored #to.  
infinity



## Crazing

Signature of enamelled lava  
#fusion.reaction  
#unique.appearance



## Decor

Quite an art  
#handmade  
#unique.piece



## Effects

the new look of lava  
#random  
#all.about.the.aesthetic



## Chromo

Lava printing  
#ink.enamel  
#modern



# Innovative

Enamel / Enamel veil / Rough stone / Relief / Material effect...



The craft of crazing



The craft of stenciling



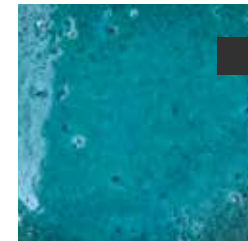
The crafting of effects



The craft of enameling



The crafting of the material



The crafting of porosity

# Technical sheet

## Volcanic stone, raw material

### \* Description of the different lavas of the Auvergne region

The lava from our ancestral and natural region (Auvergne) is an aesthetic rock, pleasant to look at and touch.

It is a natural mineral gray stone. Each lava flow has a different shade and shade of color ranging from light gray to dark gray. The texture, hardness and solidity of lava make it very interesting for construction, sculpture and enamelling ...



**Volvic lava**  
(Puy de la Nugère)

Fine,  
regular grains  
medium grey



**Lava of Mont-Dore**  
(Puy de Sancy)

Light gray color  
encrusted with  
phenocrysts



**Chambois lava**  
(Puy de Dôme,  
Puy de Côme)

Fine or  
bubbly grains,  
darker grey shade

### \* Technical aspects

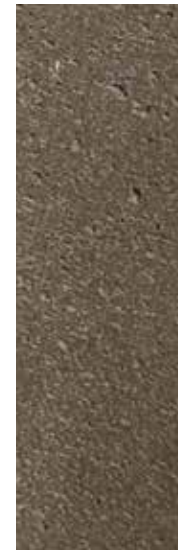
	VOLVIC	MONT-DORE	CHAMBOIS
VOLUMIC MASS	2260 Kg / m <sup>3</sup>	2290 kg / m <sup>3</sup>	2670 kg / m <sup>3</sup>
OPEN POROSITY	17.8 %	19.4 %	6.7 %
RESISTANCE TO BENDING	10.6 MPa	6.7 MPa	12.7 MPa
UNI AXIAL COMPRESSION	104.0 N / mm <sup>2</sup>	99.0 N / mm <sup>2</sup>	84.0 N / mm <sup>2</sup>
FROST RESISTANCE	144 cycles	144 cycles	144 cycles
SLIP RAW	83 (humide)	94 (humide)	91 (humide)
WEAR	21.5 mm	21.5 mm	22 mm

### \* Technical advantages

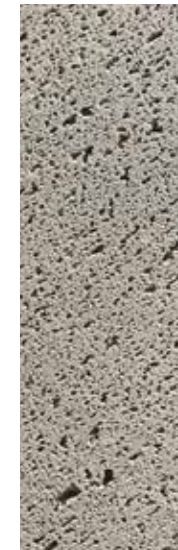
- Insensitive to different weather variations and atmospheric conditions.
- Resistant to high and low temperatures (does not burn, does not freeze)
- Corrosion resistant (salt, sand, etc.)
- Resistant to chemicals, acids (except hydrofluoric acid)
- Modelable (large size, solid, various thicknesses, etc.)

### \* Possibility of raw lava finishes

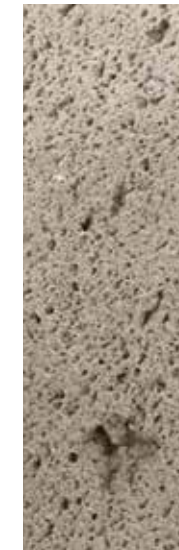
NB : The visuals below are the finishes on Volvic lava, but these can be done on the 3 types of stones mentioned above.



**Polished  
finish**



**Raw  
finish**



**Brushed  
finish**



**Bush hammered  
finish**

# Technical sheet

## Auvergne enamelled lava

### \* Technical advantages

- Very hygienic (does not retain bacteria)
- Resistant to stains and chemicals
- Scratch resistant
- Frost resistant
- Heat resistant
- UV resistant (the color does not vary over time)
- Indoor / outdoor use

### \* Technical aspects

THICKNESS	10 mm	15 mm	20 mm	30 mm	40 mm	50 mm	60 mm
WEIGHT*	24 kg	36 kg	48 kg	72 kg	96 kg	120 kg	144 kg

\*weight/m<sup>2</sup> in relation to the thickness

### \* Particularities

Crazing, the signature of enamelled lava.

Fine surface cracks are an inherent characteristic of enamel.

This aspect is more or less visible depending on the different colors.

It cannot be invisible but can be accentuated.



### \* Maintenance tips



Wash with sponge or cloth



Use soap, a multi-surface product, household alcohol or white vinegar



High temperature resistance



Very hygienic

## Tableau comparatif des matériaux

MATERIALS	SCRATCH RESISTANCE	SHOCK/IMPACT RESISTANCE	HEAT RESISTANCE	ACIDS/ DETERGENTS RESISTANCE	STAIN RESISTANCE	HYGIENIC	EASE OF MAINTENANCE
ENAMELLED LAVA	***	**	***	***	***	***	***
GRANITE	**	**	**	**	**	**	**
QUARTZ	**	**	*	**	**	**	**
CERAMIC	**	**	***	**	***	**	**
CORIAN	*	**	*	**	**	**	**
STAINLESS STEEL	**	**	***	***	***	***	**
GLASS	*	*	*	***	***	***	**
MARBLE	**	**	**	**	**	**	*
SLATE	*	*	***	**	**	**	**
WOOD	*	**	*	*	**	*	*
LAMINATE	*	*	*	*	**	*	***

\* Low \*\* Standard \*\*\* Strong

# Do you have a project?

Together we can work out...



## Dimensions

for costing,  
even approximate



## Thickness

We are here to  
guide you!



## Shaping

simple, special  
shapes, massive



## Edges

straight, ¼ round,  
delta ...



## Specificity

holes, fixings to be  
provided...



## Color

Ask us for samples!



## Service

supply only, supply  
and installation...



## Delivery

delivery address,  
access information...

“ *The Tradition Pierre team  
is at your entire disposal  
for any information and to support  
you throughout your project!*

*See you soon...*

**Jean-Charles**

”





# TRADITION PIERRE

FRANCE

See you soon!

---

+33 (0)4 73 83 65 83

[office@traditionpierre.com](mailto:office@traditionpierre.com)

[www.traditionpierre.com](http://www.traditionpierre.com)

5, rue de Grangevieuille  
63370 LEMPDES (FRANCE)

